

Taman Pudu Ulu in poor shape

By FARID WAHAB
faridwahab@thestar.com.my

DBKL urged to fix facilities at park following public complaints

QUESTIONS are being raised over the maintenance of Taman Pudu Ulu with the public complaining of cracked tiles, misplaced drain covers and missing wire sockets.

Adding to the list of concerns at the popular recreational site in Cheras, Kuala Lumpur, is water ponding on the footpath after downpours, posing a risk to joggers and other park-goers.

Park committee chairman Tan Sri Lee Lam Thye said he had received many complaints from various quarters over the past two years.

“There have been reports of visitors who slipped due to the water ponding on the footpath.

“Kuala Lumpur City Hall (DBKL), as the park owner, must take immediate measures to fix the problems,” he told *StarMetro*.

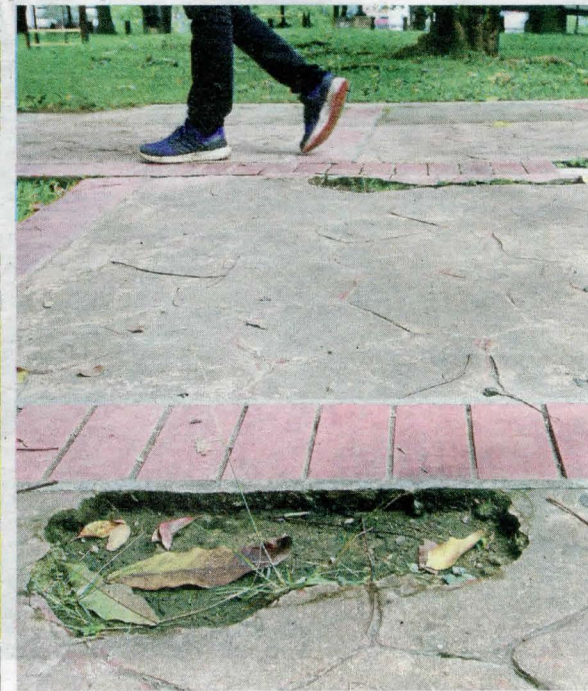
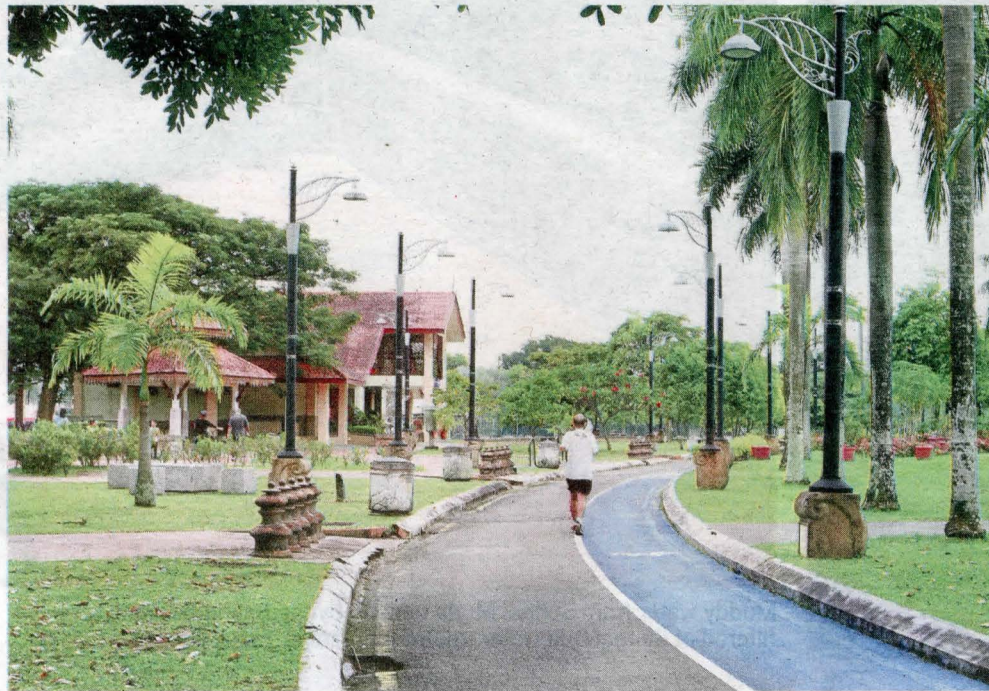
The committee is a non-governmental organisation appointed to oversee the park and promote responsible usage among visitors.

Lee also raised concerns about the canopy at the pavilion in the park, which was damaged during a thunderstorm last year.

“Repairing the canopy must be prioritised as it provides shelter to visitors,” he said.

A check by *StarMetro* found the wading pool at the park closed, with a notice stating that maintenance work was being carried out.

Park committee member Abdul Rahim Tamby Chik said no action



Water ponding occurs on the footpath in Taman Pudu Ulu after downpours, putting park-goers at risk of slipping and falling. (Right) Cracked tiles at the park are an eyesore and a safety hazard. — Photos: LOW LAY PHON/The Star

had been taken despite numerous complaints to DBKL.

“We were told our concerns had been forwarded to the relevant department but there was no budget to undertake the repairs,” he said.

He also highlighted that the pool was almost never opened to

public due to frequent damage to its tiles.

“Once, a snake was found there. The pool should be removed permanently and replaced with other facilities for children,” he said.

Abdul Rahim also lamented the broken closed-circuit television

cameras at the two parking lots.

“DBKL used to conduct patrols in the area but that was discontinued a few years ago.

“This is worrying as we have received reports of theft and break-ins of vehicles parked there,” he said.

As at press time, DBKL had yet to

respond to a request for comment.

Spanning 25.9ha, Taman Pudu Ulu was opened on Dec 15, 2007, after a delay to its construction in late 1997 due to the economic recession.

The park, which also has a children’s playground and rugby field, opens daily from 6am to 8pm.