

# 'Address safety amid traffic surge'

## Stakeholders call for urgent road and sign improvements to Jalan Chan Sow Lin

By RACHANAH SUGUMARAN  
metro@thestar.com.my

LOCAL communities are raising the alarm on road safety issues along Jalan Chan Sow Lin in Kuala Lumpur.

This comes as the bustling industrial and commercial area faces mounting challenges from a surge in road traffic.

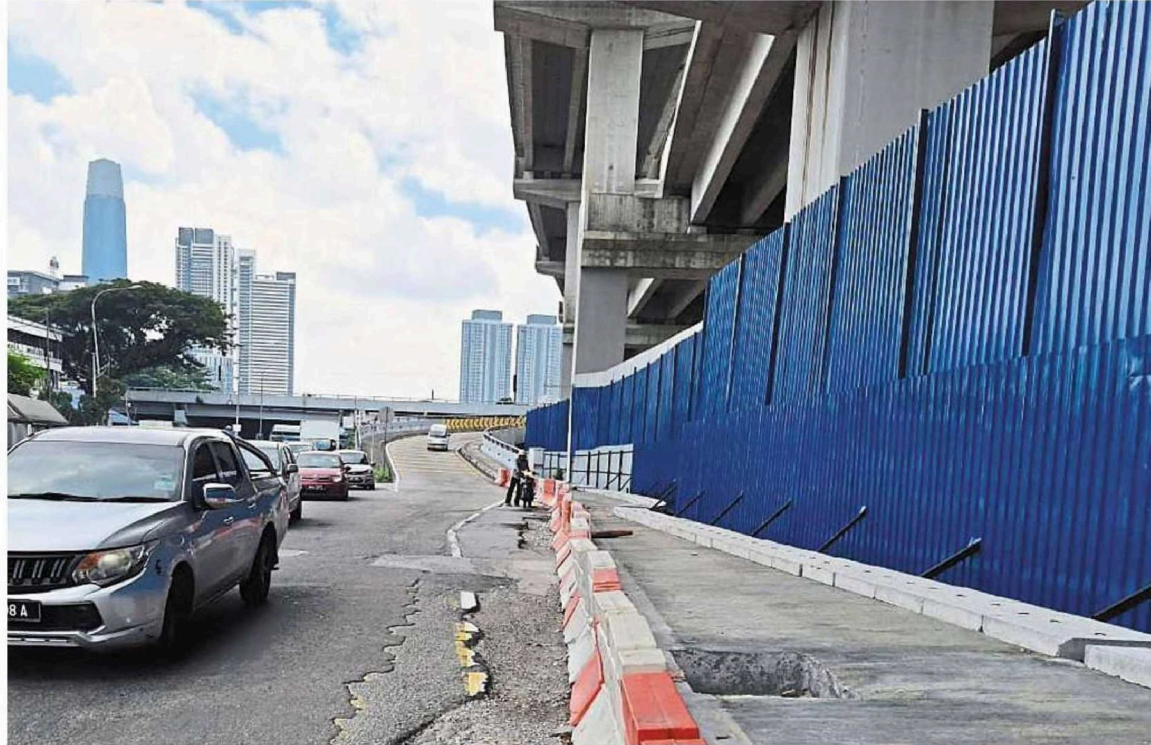
From inadequate road markings to the plethora of plastic road barriers and potholes, traffic infrastructure is struggling to cope in this city area that is over a century old.

This mix of issues has led to growing congestion and safety concerns from an influx of vehicles, primarily due to Setiawangsa-Pantai Expressway (SPE) which opened last year and passes overhead.

Kepong community social activist and road user Yee Poh Ping said the main problem was Jalan Chan Sow Lin being narrow yet having to cater to an increasing number of vehicles.

"By right, the authorities should have completed all the necessary facilities before SPE was opened to traffic.

"In Jalan Chan Sow Lin, we are witnessing a perfect storm of road-related problems which have created a dangerous envi-



Example of the plethora of plastic road barriers found in the area, which is an old part of Kuala Lumpur seeing an influx of vehicles.

ronment for users," said Yee.

He cited a lack of clear road markings, potholes posing a threat to vehicles and pedestrians alike, and haphazardly placed plastic road barriers that

confuse drivers.

"When vehicles from Cheras, the Cheras flyover, Jalan Tun Razak and Pudu converge at the Jalan Chan Sow Lin junction, there are inadequate road mark-

ings for vehicles intending to turn onto Jalan Chan Sow Lin Satu heading towards the Kuala Lumpur-Seremban highway," he said.

Yee opined that widening the

---

**"The authorities should have completed all the necessary facilities first. Widening the Jalan Chan Sow Lin junction will greatly improve the situation."**

Yee Poh Ping

---

Jalan Chan Sow Lin junction would greatly improve safety for all road users.

"We urge Kuala Lumpur City Hall to prioritise the enhancement of Jalan Chan Sow Lin to ensure the well-being of everyone who relies on this critical thoroughfare.

"Local businesses and residents near the area are looking for a comprehensive solution," he added.